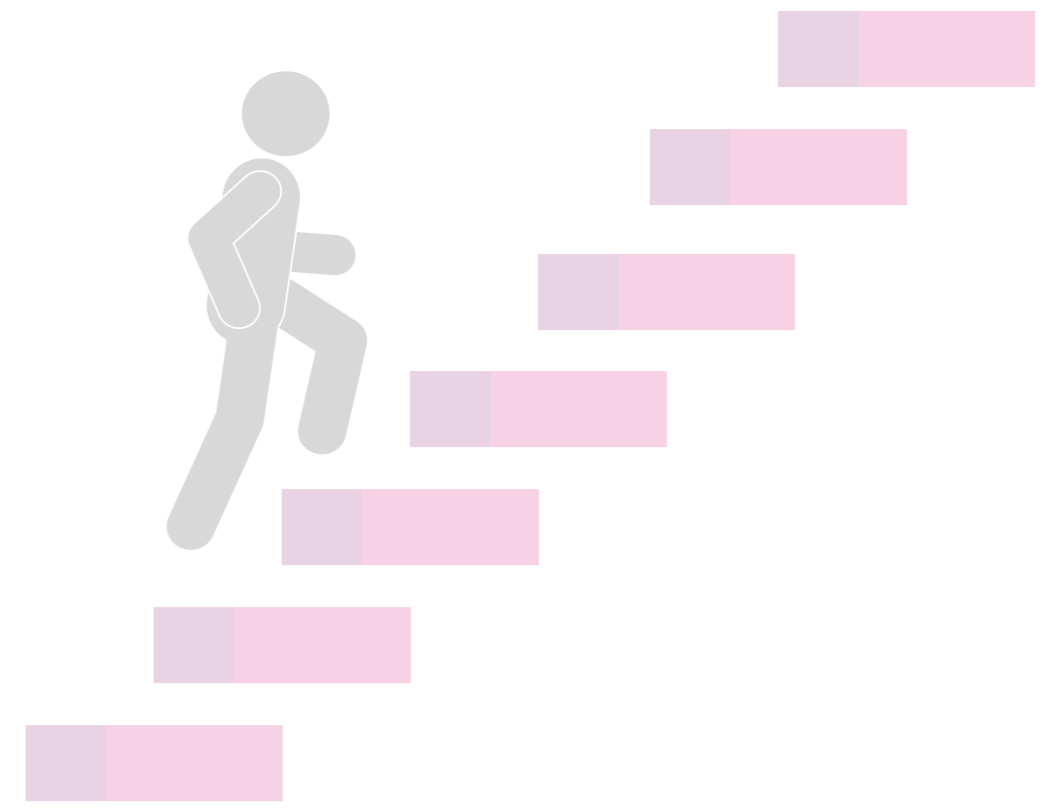


My Learning Journey in Junior Cycle Engineering

A Classroom-Based Assessment (CBA) is a snapshot of where you are on your learning journey in Engineering. The CBA is an opportunity for you to demonstrate your knowledge, skills, understanding and values as well as your experience from first year and prior to that. While each CBA focuses on specific lenses, both support the ongoing development of your Engineering skills and understanding. The CBAs will also support you in engaging with your final project and examination in Year 3 of Junior Cycle and further into Senior Cycle.



YEAR 3



Project 70% & Written Examination 30%

A project and a written examination are set by the State Examinations Commission (SEC) in Year 3 of Junior Cycle. Both forms of assessment will give you an opportunity to demonstrate your learning and experiences over your three years of Engineering.

Note:

Take time to reflect on your progress over the three years and through both CBA 1 and CBA 2. Think about the feedback you received from your teacher and how you might apply this feedback to your final project and written examination.

YEAR 3 - FINAL ASSESSMENT

AFTER CBA 1



Listen to the feedback from your teacher during and after CBA 1. Use this feedback, together with your own reflections on your work to further develop your Engineering knowledge, skills, understanding and values.

DURING CBA 1

CBA 1 asks you to explore the applications of Engineering in the world around you. You are asked to research, analyse and draw conclusions from an application of Engineering that you have chosen. There is particular focus on the following lenses:

Research and analysis Engineering principles Evaluating your CBA Communicating your CBA



Note:

As you move through CBA 1, reflect, evaluate, record and communicate what you are learning and how your thinking develops.

YEAR 2 - CBA 1 MOMENT

BEFORE CBA 1



Be curious, focus on developing research and evaluation skills which explore Engineering applications and principles. Make links between what you learn in Engineering and the world around you and explore topics and ideas that are of interest to you.

AFTER CBA 2



Listen to the feedback from your teacher during and after CBA 2. Use this feedback, together with your own reflections on your work, to further analyse your Engineering knowledge and skills in preparation for your project.

DURING CBA 2

CBA 2 asks you to research and develop your understanding of a theme related to your third year project. You will be asked to present your findings using any appropriate media that captures your response. This theme will change each year and will be influenced by a theme from the final project. There is particular focus on the following lenses:

Research and analysis Exploring concepts Communicating your CBA



Note:

As you move through CBA 2, reflect, evaluate, record and communicate what you are learning and how your thinking develops.

YEAR 3 - CBA 2 MOMENT

BEFORE CBA 2

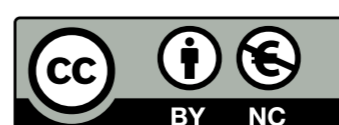


Be curious, focus on developing your research skills to investigate themes and compare concepts which inform your project work. Build your communication skills by communicating using a broad range of media.

CBA 2 IS RELATED TO A THEME OF THE THIRD YEAR PROJECT



YEAR 1 - MY LEARNING JOURNEY



Mo Thuras Foghlama in Innealtóireacht na Sraithe Sóisearaí

Is léargas é Measúnú Rangbhunaithe (MRB) ar an áit a bhfuil tú ar do thuras foghlama san Innealtóireacht. Is deis duit é an MRB le d'eolas, scileanna, tuiscint agus luachanna a léiriú chomh maith le do thaithí ón 1ú bliain agus roimhe sin. Cé go ndíríonn gach MRB ar pheirspictíochtaí áirithe, cabhraíonn siad le do scileanna agus do thuiscint Innealtóireachta a fhorbairt go leanúnach. Cabhróidh na MRBna leat freisin dul i ngleic le do thionscadal agus leis an scrúdú i mBliain 3 den tSraith Shóisearach agus ina dhiaidh sin sa tSraith Shinsearach.

TAR ÉIS MRB 2



Éist leis an aiseolas ó do mhúinteoir le linn agus tar éis MRB 2. Bain úsáid as an aiseolas sin, mar aon le do chuid machnaimh féin ar do chuid oibre, chun anailís bhreise a dhéanamh ar d'eolas agus ar do scileanna Innealtóireachta mar ullmhúchán do do thionscadal.

LE LINN MRB 2

Iarrtar ort in MRB 2 taighde agus forbairt a dhéanamh ar do thuiscint ar théama a bhaineann le do thionscadal sa tríú bliain. Iarrfar ort do chuid torthaí a chur i láthair ag baint úsáid as aon mheáin chuí a léiríonn do fhreagra. Athróidh an téama seo gach bliain agus beidh tionchar ag téama ón tionscadal deiridh air. Tá fócas ar leith ar na dearthaí seo a leanas:

Taighde agus anailís

Coincheapa a Fhiosrú

Do chuid oibre a chur in iúl



Nóta:

De réir mar a bhogann tú trí MRB 2, déan machnamh, meastóireacht, taifeadh agus cumarsáid ar an méid atá á fhoghlaim agat agus ar an gcaoi ina dtagann forbairt ar do chuid smaointeoireachta.

BLIAIN 3 - ÓCÁID MRB 2

ROIMH MRB 2

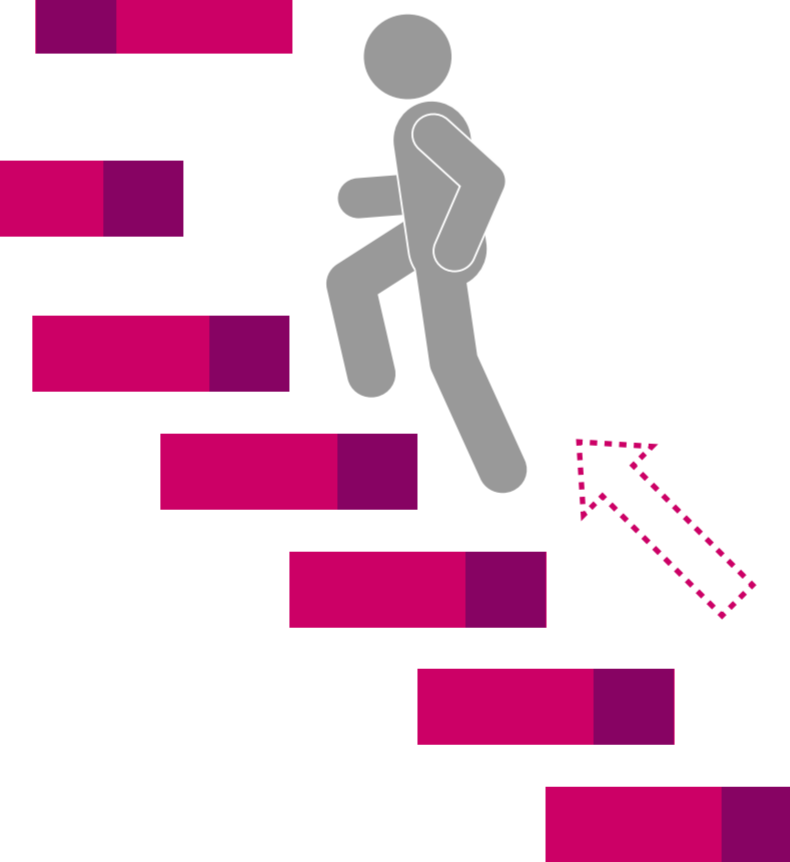


Bí fiosrach, díriú ar do scileanna taighde a fhorbairt chun téamaí a imscrúdú agus coincheapa a chur i gcomparáid a chuirfidh bonn eolais faoi d'obair thionscadail. Tóg ar do scileanna cumarsáide trí chumarsáid a dhéanamh le réimse leathan meán.

BLIAIN 1 MO THURAS FOGHLAMA



BAINNEANN CBA 2 LE TÉAMA I DTIONSADAL AN TRÍÚ BLIAIN



BLIAIN 3



Tionscadal 70% Scrúdú Scríofa 30%

Is é Coimisiún na Scrúduithe Stáit (CSS) a shocraíonn an tionscadal agus an scrúdú scríofa i mBliain 3 den tSraith Shóisearach. Tabharfaidh an dá chineál measúnaithe deis duit d'fhoghlaim agus d'eispéiris a léiriú thar do trí bliana den hinnealtóireachta.

Nóta:

Tóg am chun machnamh a dhéanamh ar do dhul chun cinn thar na trí bliana agus trí MRB 1 agus MRB 2 araon. Smaoinigh ar an aiseolas a fuair tú ó do mhúinteoir agus conas a d'fhéadfá an t-aiseolas sin a chur i bhfeidhm ar do thionscadal deiridh agus ar do scrúdú scríofa.

BLIAIN 3 - MEASÚNÚ DEIRIDH

TAR ÉIS MRB 1



Éist leis an aiseolas ó do mhúinteoir le linn agus tar éis MRB 1. Bain úsáid as an aiseolas sin, mar aon le do chuid machnaimh féin ar do chuid oibre chun d'eolas, scileanna, tuiscint agus luachanna Innealtóireachta a fhorbairt tuilleadh.

LE LINN MRB 1

Iarrann MRB 1 ort iniúchadh a dhéanamh ar fheidhmeanna na hinnealtóireachta ar fud an domhain timpeall ort. Iarrtar ort anailís a dhéanamh agus conclúidí a tharraingt ó fheidhm innealtóireachta a roghnaigh tú. Tá fócas ar leith ar na dearthaí seo a leanas:

Taighde agus anailís

Prionsabail innealtóireachta

Meastóireacht a dhéanamh ar do MRB

Do MRB a chur in iúl



Nóta:

De réir mar a bhogann tú trí MRB 1, déan machnamh, meastóireacht, taifeadh agus cumarsáid ar an méid atá á fhoghlaim agat agus ar an gcaoi ina dtagann forbairt ar do chuid smaointeoireachta.

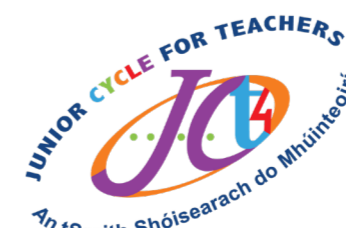
BLIAIN 2 - ÓCÁID MRB 1

ROIMH MRB 1



Bí fiosrach, díriú ar do scileanna taighde agus meastóireachta a fhorbairt a scrúdaíonn feidhmeanna agus prionsabail Innealtóireachta.

Déan naisc idir an méid a fhoghlaimíonn tú san Innealtóireacht agus an domhan thart timpeall ort agus déan iniúchadh ar ábhair agus ar smaointe a bhfuil suim agat iontu.



An tSraith Shóisearach do Mhúinteoirí
Junior **CYCLE**
for teachers