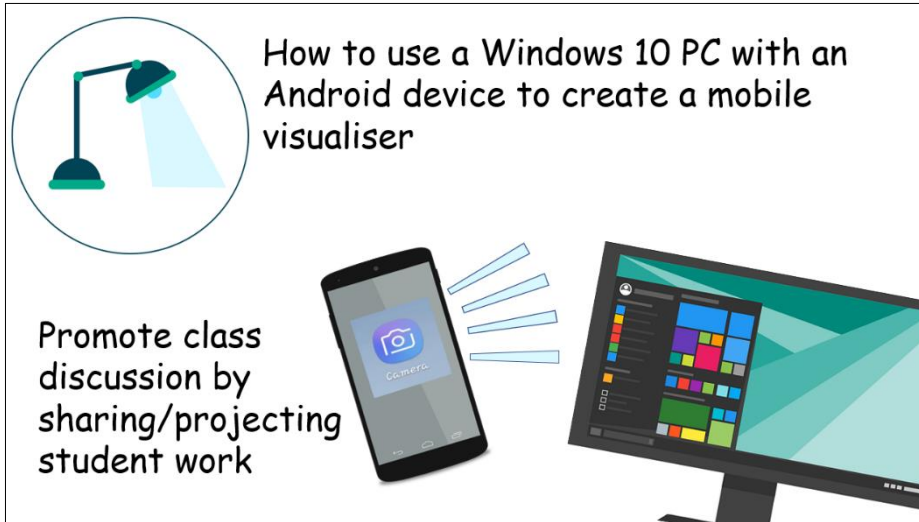


How to use an Android Device with a Windows 10 PC as a Mobile Visualiser



How to use a Windows 10 PC with an Android device to create a mobile visualiser

Promote class discussion by sharing/projecting student work

1.



Ensure both the Windows 10 device and the Android device are connected to the same **Wi-Fi network**

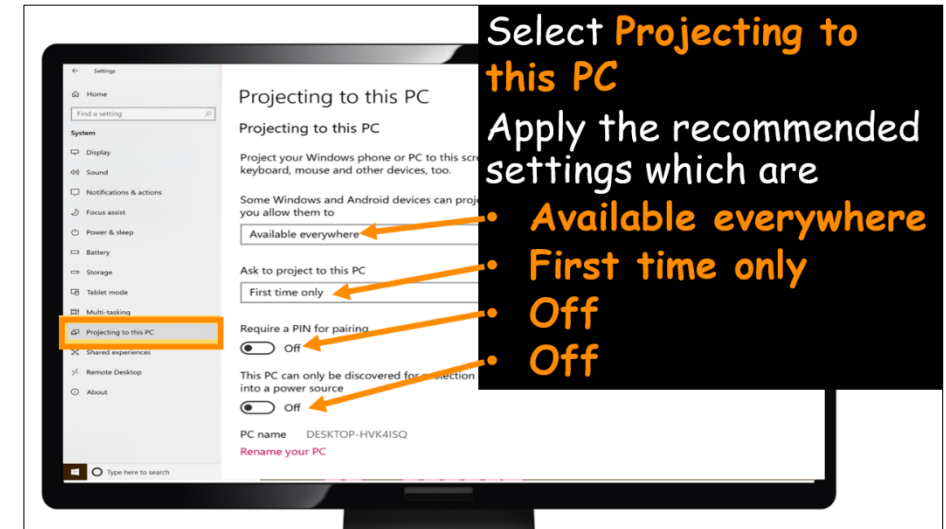
2.



On the Windows device open **Windows Settings**

Select **System**

3.

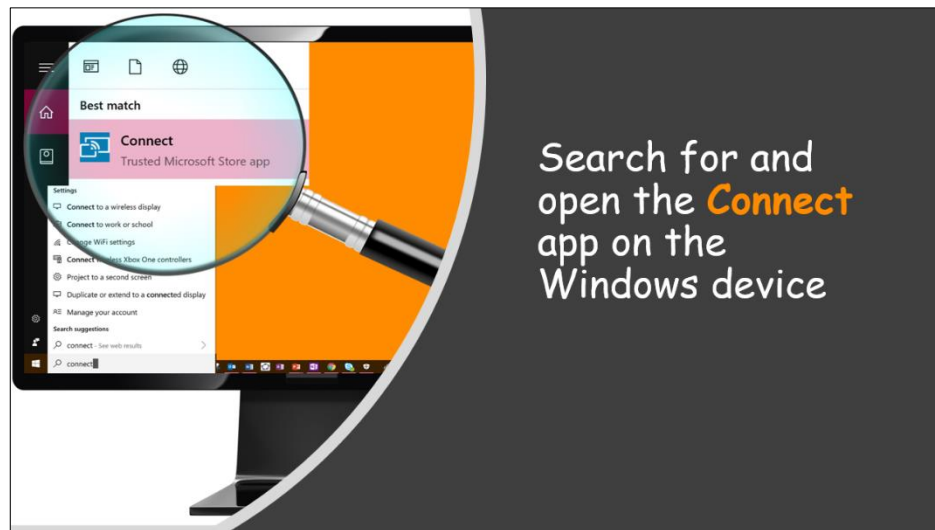


Select **Projecting to this PC**

Apply the recommended settings which are

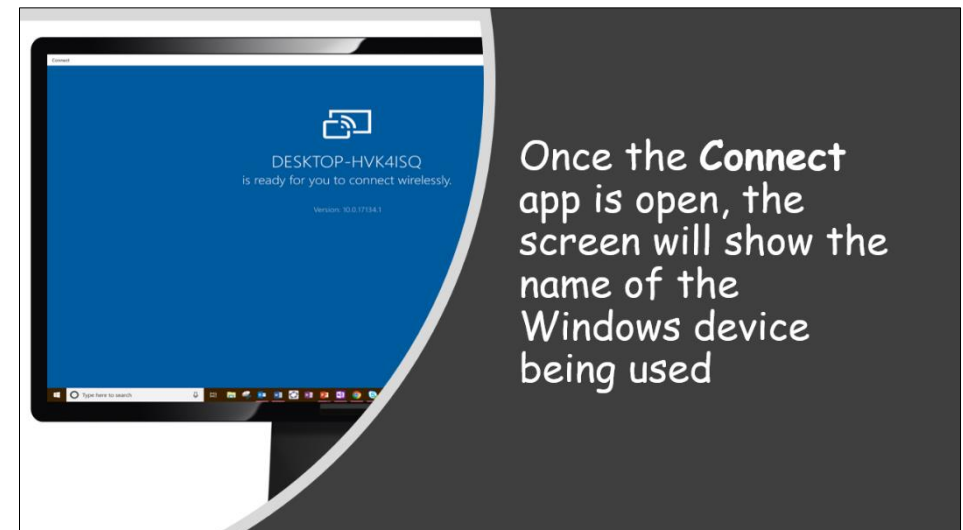
- **Available everywhere**
- **First time only**
- **Off**
- **Off**

4.



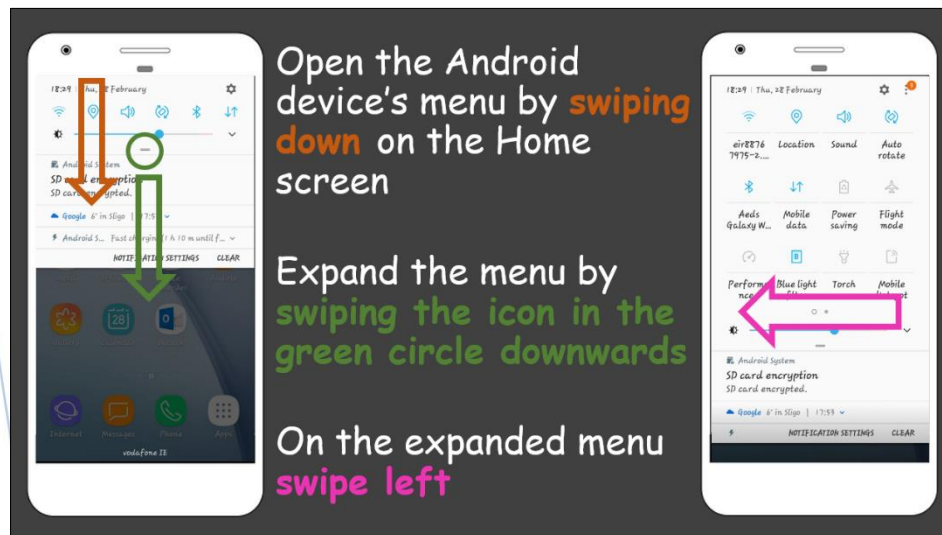
Search for and open the **Connect** app on the Windows device

5.



Once the **Connect** app is open, the screen will show the name of the Windows device being used

6.

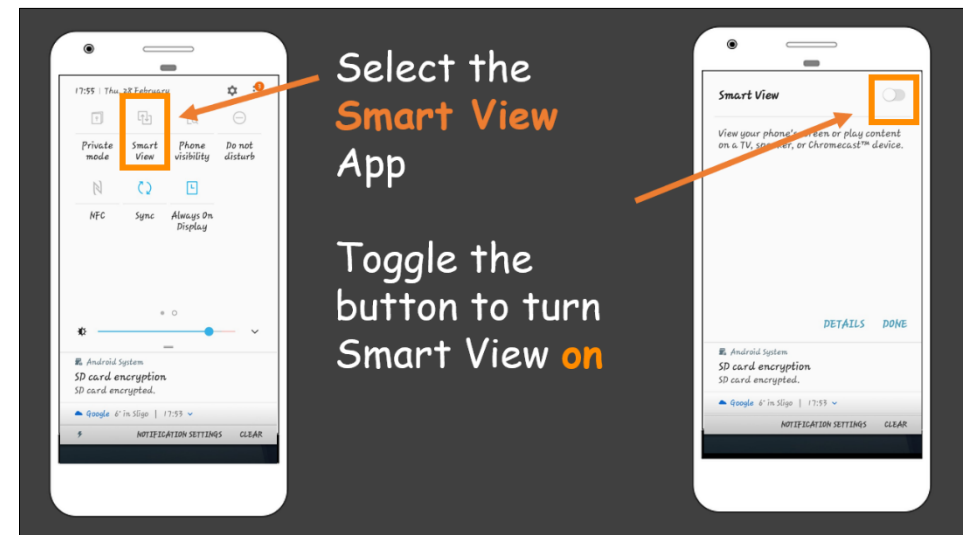


Open the Android device's menu by **swiping down** on the Home screen

Expand the menu by **swiping the icon in the green circle downwards**

On the expanded menu **swipe left**

7.



Select the **Smart View** App

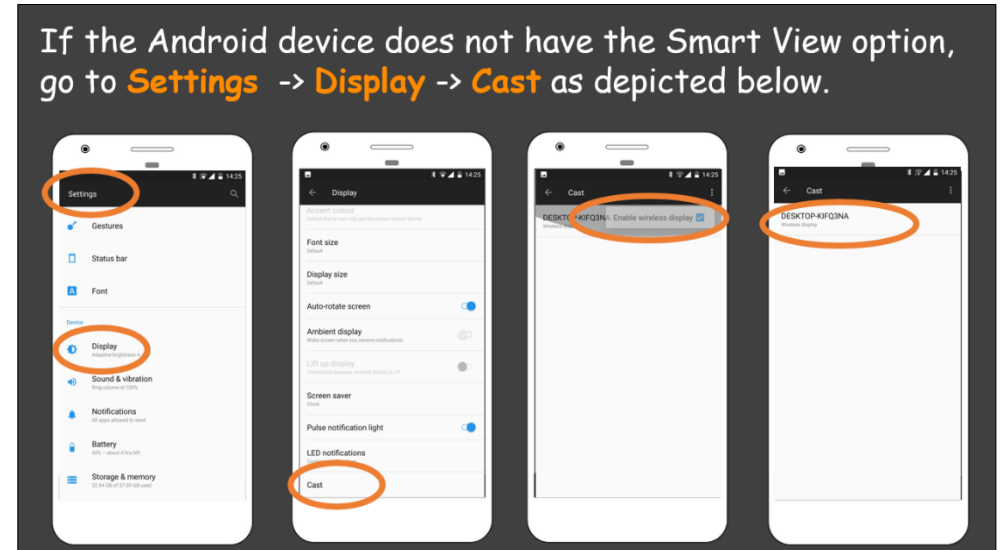
Toggle the button to turn **Smart View on**

8.



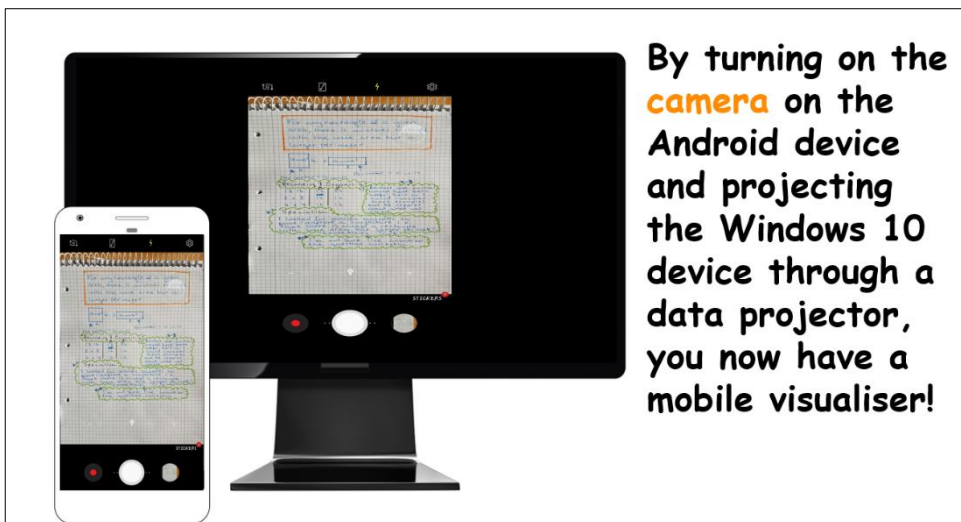
Select the Windows 10 device name from **Available Devices** and after a few moments the Android screen will be projected to the Windows 10 computer

9.



If the Android device does not have the Smart View option, go to **Settings** -> **Display** -> **Cast** as depicted below.

10.



By turning on the **camera** on the Android device and projecting the Windows 10 device through a data projector, you now have a mobile visualiser!

11.



By using a mobile holder such as this, a device can be held in place whilst showcasing work

12.

*Please be advised that your mobile device may have different screen sharing options from the device depicted in this guide.

** Please be advised to consult your school's Acceptable Use Policy before using an Android device as a visualiser.