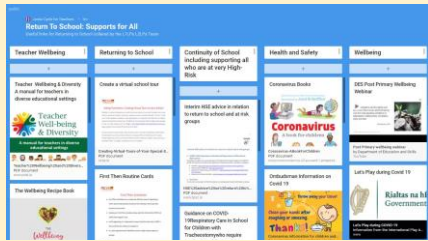
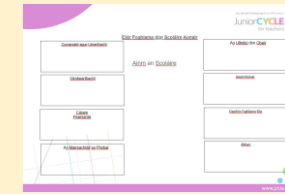


In light of the Covid-19 Pandemic L1LPs/L2LPs school visits will not be taking place prior to Christmas. We are offering self-directed pieces online, Live Support or a Check in call, all via phone, Email, Zoom and our website. To register for any of these, please use the orange L1LPs/L2LPs banner on www.jctregistration.ie School management have the school login details to do this. We will be contacting schools in early October.

We have collated some of the resources available to support all teachers and students on the Return to School on a Padlet. Click on the image below to access it.



Tá acmhainn nua curtha leis na hacmhainní ar ár suíomh don leagan Gaeilge a chabhróidh le múinteoirí agus iad i mbun pleanála do Chlár Foghlama Leibhéal 1 agus do Chlár Foghlama Leibhéal 2. Is féidir teacht air [anseo](#).



Sample e-portfolios that may be useful for both L1LPs and L2LPs can be found on our website [here](#).



More details on an upcoming webinar 'Engaging with L1LPs and L2LPs at Home and in the Community' to follow.

Click on the link below to see all upcoming JCT webinars.



We would like to use your stories. Contact sarah.nally@jct if you can get involved.



We are running two online CPD workshops on the L1LPs and L2LPs with Kildare Education Centre in November.

“An introduction to L1LPs and L2LPs” will run on **Wednesday the 4th of November** via Zoom from **6.30pm to 8pm**

“Teaching, Learning, Assessment & Reporting of L1LPS and L2LPs” will run on **Wednesday the 11th of November** via Zoom from **6.30pm to 8pm**

Teachers can register by clicking the image above.



We are running two online CPD workshops on the L1LPs and L2LPs with Athlone Education Centre in October.

“An introduction to L1LPs and L2LPs” will run on **Thursday the 8th of October** via Zoom from **7.30pm to 8.30pm**

“Teaching, Learning, Assessment & Reporting of L1LPS and L2LPs” will run on Thursday the 15th of October via Zoom from **7.30pm to 8.30pm**

Teachers can register by clicking the image above.

Sarah Nally, Team Leader for L1LPs/L2LPs will assume a school leadership position from November 2020.

She would like to say a huge thank you to all past and present Associates and Advisors that she has had the pleasure of working with.

A special thanks to Principals and Boards of Management for facilitating their work with JCT.



Wondering what L1LPs and L2LPs looks like in other classrooms and schools? Click on the image above for our webinar which an insight into both in action in Mainstream and Special Schools.



If you are new to teaching L1LPs this year this Webinar will give you an overview of the programmes. Click on the image above to access it.



We are here to help, please contact any of us via email with any enquiries or questions you may have.

- sarah.nally@jct.ie Team Leader
- fiona. Kearney@jct.ie Advisor
- lisa.kelly@jct.ie Advisor

The JCT Whole School team have repurposed **Teaching and Learning strategies** for the purpose of the physically distanced classroom and for students engaging with learning from outside of school. They have also added suggestions of how to use the strategies to include all learners. Click on the image below to access them.



https://twitter.com/JCTL1LPs_L2LPs

